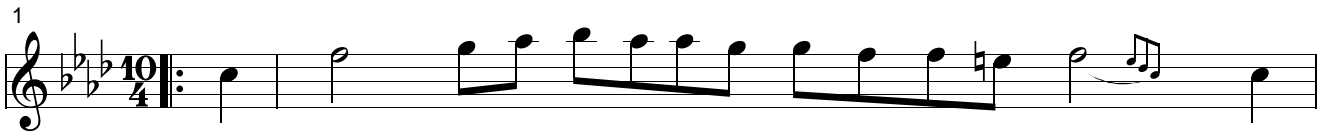


Lamma bada yatathanna

Rythme = 3 + 4 + 3

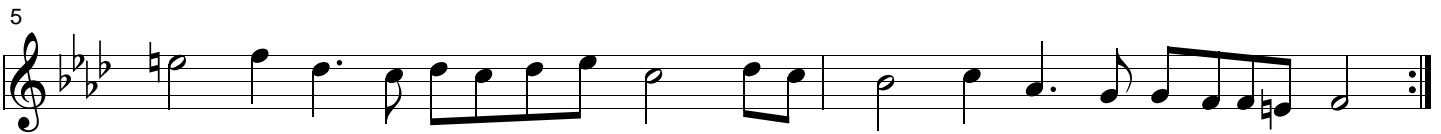
départ en levée



Lam - ma ba - da _____ ya - ta - tha - n - na, Lam -
Aw ma bi - La - H - zu a - sa - r - na, Aw



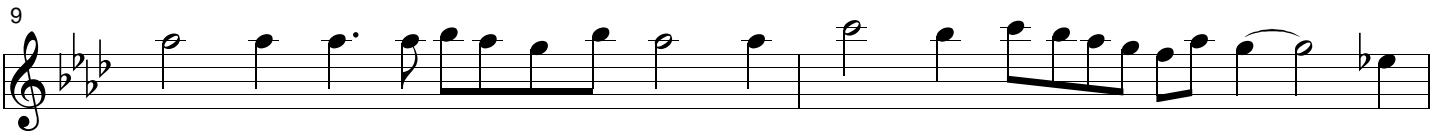
- ma ba - da _____ ya - ta - tha - n - na, A - man, a - man, a - man, a - man, Hub -
ma bi - La - H - zu a - sa - r - na, A - man, a - man, a - man, a - man, Ghu -



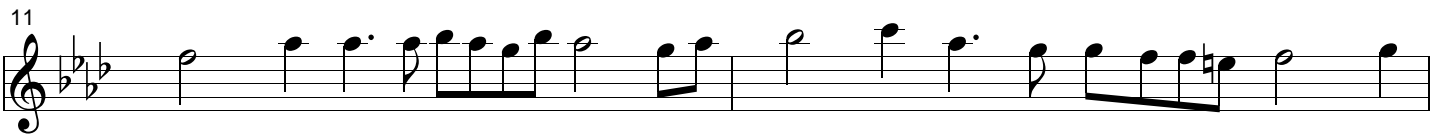
- bi ja - ma - lu fa - ta - nna wo - men, A - man, a - man, a - man, a - man.
- snu tha - na _____ H - i - na - mal, A - man, a - man, a - man, a - man.



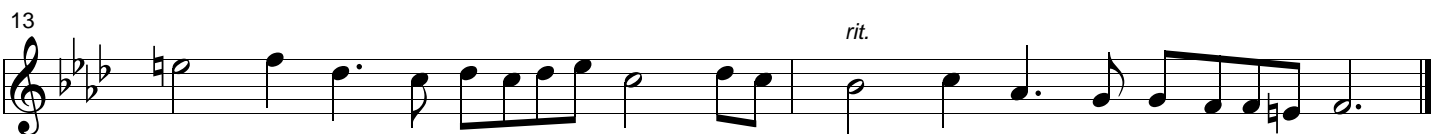
Waa - di wa - ya _____ Hi - ra - ti, Waa - di wa - ya _____ Hi - ra - ti, Man



li sha - fee - a - shak wa - ti, Il - la ma - lee - kul _____ ja -



- mal, ??? _____ A - man, a - man, a - man, a - man, Fil



hub - bi min la - wa - a - ti, A - man, a - man, a - man, a - man.

